

BAP1.5

如何订购/ HOW TO ORDER

BA	P	1.5	前盖 Front cover	旋向 Rotation	规格 Size	轴伸 Shaft	油口 Ports	油口位置 Ports position	油封 Seals	可选项 Options
系列号 Series	P- 齿轮泵 Pump	组别 Group	Q0	D 顺时针转 Clockwise S 逆时针转 Counter clockwise R 可正反转 Reversible	2 3 4 5 6 8 9 11 12					

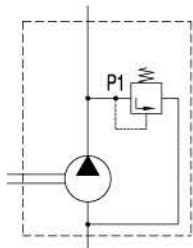
油封

省略-温度范围在-10℃~+80℃,进油口最高绝对压力为3bar。
V-适用于高温介质, 温度范围在-10℃~+120℃。
H-适用于低温介质, 温度范围在-40℃~+80℃。
T-适用于进油口最大绝对压力3-6bar。
N-适用于进油口最大绝对压力3-10bar。

Seals

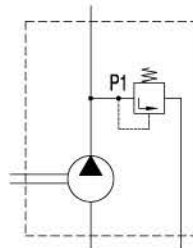
Omit-Range between -10°C and +80°C, inlet pressure up to max. 3 bar absolute.
V-Version suitable for fluid at hi-temperatures, range between -10°C and +120°C.
H-Version suitable for fluid at low-temperatures, range between -40°C and +80°C.
T-Version suitable for inlet pressure up to max. 3 and 6 bar absolute.
N-Version suitable for inlet pressure up to max. 3 and 10 bar absolute.

可选项/Options



溢流阀。
卸压流量回到吸油口。
控制压力 P1=5...250bar。
Pressure relief valve.
Discharge returned to suction.
P1= 5...250 bar.
订货号/Ordering code

Y 180xx



溢流阀。
卸压流量外泄。
控制压力 P1=5...250bar。
Pressure relief valve.
Discharge returned to externally.
P1= 5...250 bar.

P 120xx

范例/ Examples:

BAP1.5-Q0-D-2-C0-E0= 顺时针转, 排量 2 cc/rev, Q0 前盖, C0 圆柱轴伸, E0 安装油口, 标准油封
clockwise rotation, 2 cc/rev, Q0 front cover, C0 parallel shaft, setting ports E0 type, standard seals
BAP1.5-Q0-D-2-C0-E0-N= 顺时针转, 排量 2 cc/rev, Q0 前盖, C0 圆柱轴伸, E0 安装油口, 高压油封(N)
clockwise rotation, 2 cc/rev, Q0 front cover, C0 parallel shaft, setting ports E0 type, high pressure seals(N)

BAP1.5Q0

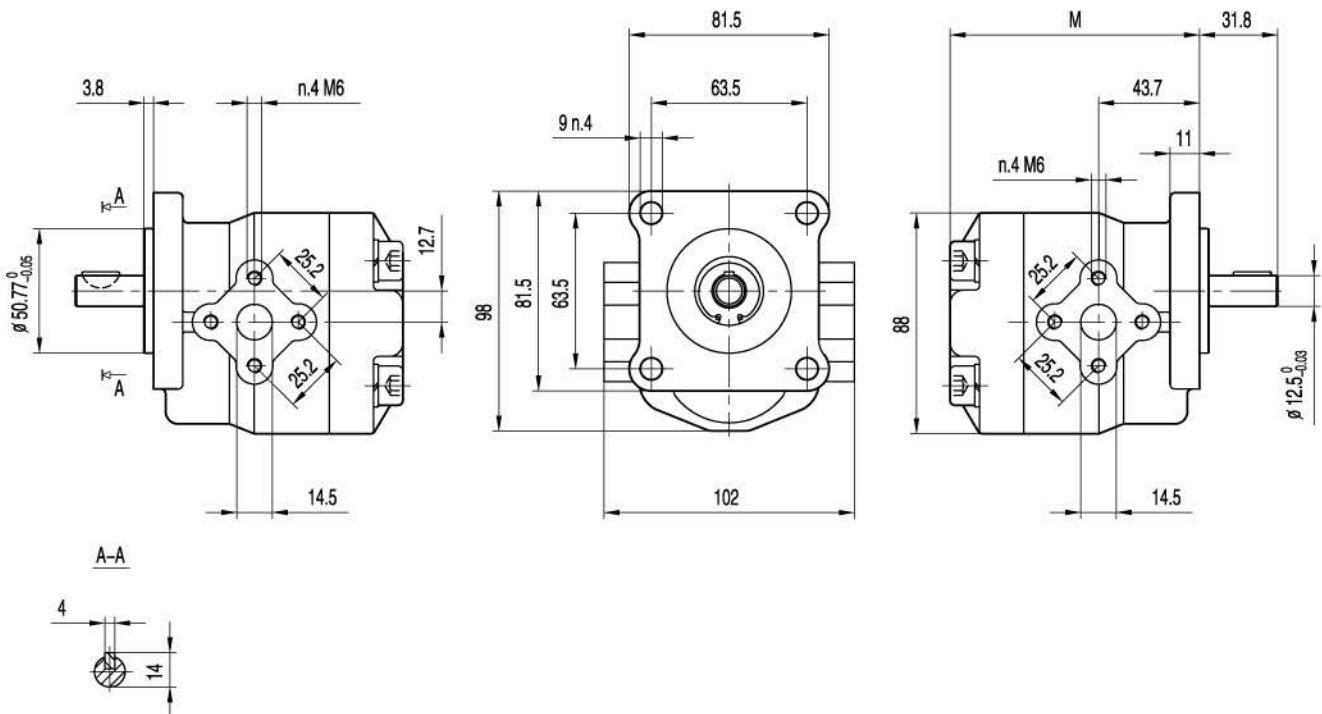


M6 螺纹深 16。
安装泵时，n.4 M10 螺钉扭矩设定为
47 ± 3 Nm。

M6 thread depth 16.
To mount the pump, n.4 M10 screws,
with a torque wrench setting fixed
at 47 ± 3 Nm.

出油口
OUTLET

进油口
INLET



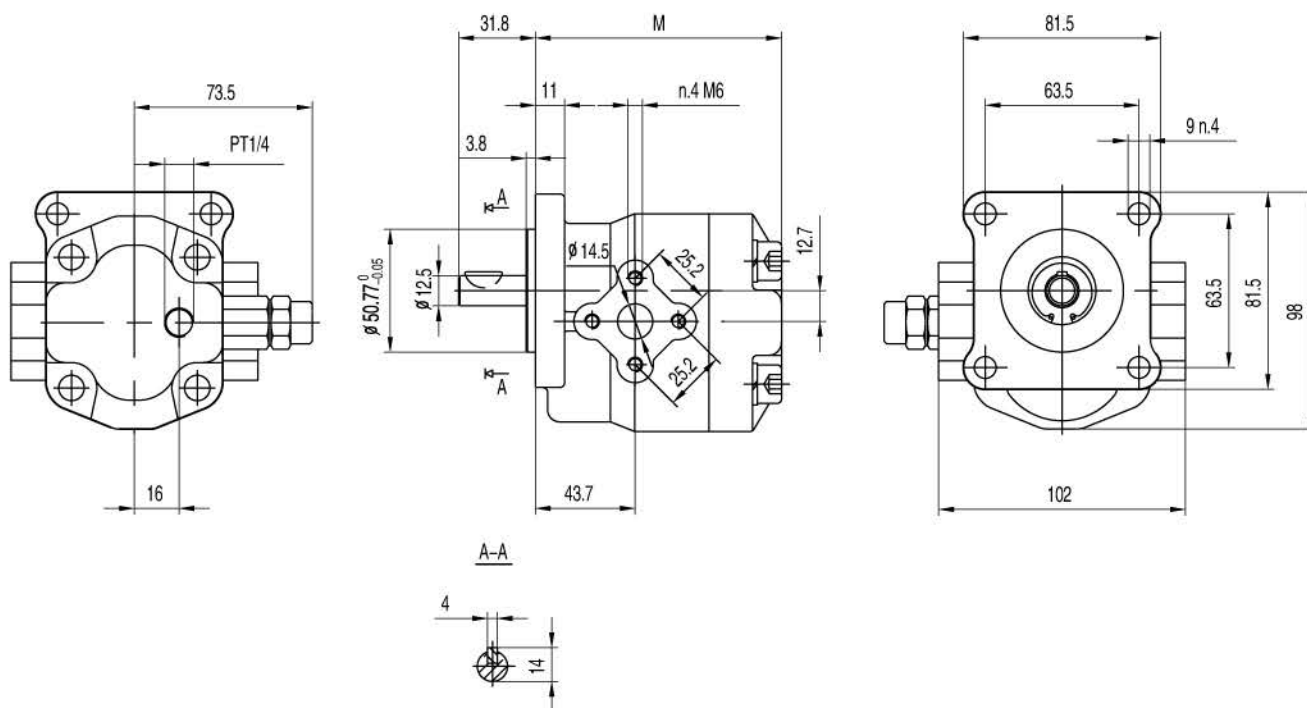
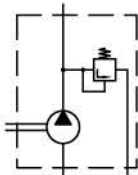
规格 Type	排量 Displacement	最大压力 Max pressure			最高转速 Max. speed	最低转速 Min. speed	尺寸 Dimensions
		P1	P2	P3			
	(cm ³ /rev)	bar	bar	bar	(r/min)	(r/min)	M mm
BAP1.5Q0-D-2	2	210	230	250	5000	900	96.7
BAP1.5Q0-D-3	3	210	230	250	5000	850	96.7
BAP1.5Q0-D-4	4	210	230	250	4500	800	96.7
BAP1.5Q0-D-5	5	210	230	250	4000	800	96.7
BAP1.5Q0-D-6	6	210	230	250	3500	700	99.7
BAP1.5Q0-D-8	8	210	230	250	3000	600	99.7
BAP1.5Q0-D-9	9	180	200	220	2500	550	102.7
BAP1.5Q0-D-11	11	180	200	220	2000	500	105.7
BAP1.5Q0-D-12	12	180	200	220	2000	500	105.7

BAP1.5Q0-Px



M6螺纹深 16.
安装泵时, n.4 M10螺钉扭矩设定为
47 ± 3 Nm.

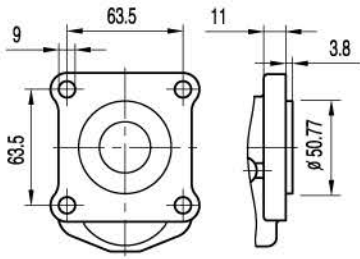
M6 thread depth 16.
To mount the pump, n.4 M10 screws,
with a torque wrench setting fixed
at 47 ± 3 Nm.



规格 Type	排量 Displacement (cm ³ /rev)	最大压力 Max pressure			最高转速 Max. speed (r/min)	最低转速 Min. speed (r/min)	尺寸 Dimensions M mm
		P1 bar	P2 bar	P3 bar			
BAP1.5Q0-D-2-Px	2	210	230	250	5000	900	96.7
BAP1.5Q0-D-3-Px	3	210	230	250	5000	850	96.7
BAP1.5Q0-D-4-Px	4	210	230	250	4500	800	96.7
BAP1.5Q0-D-5-Px	5	210	230	250	4000	800	96.7
BAP1.5Q0-D-6-Px	6	210	230	250	3500	700	99.7
BAP1.5Q0-D-8-Px	8	210	230	250	3000	600	99.7
BAP1.5Q0-D-9-Px	9	180	200	220	2500	550	102.7
BAP1.5Q0-D-11-Px	11	180	200	220	2000	500	105.7
BAP1.5Q0-D-12-Px	12	180	200	220	2000	500	105.7

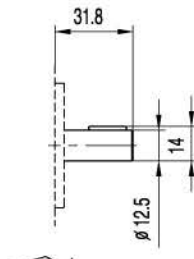
BAP1.5

前盖/Front COVER



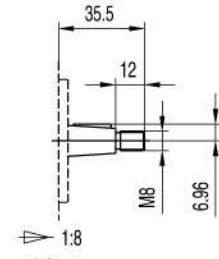
Q0

轴伸/SHAFTS



C0

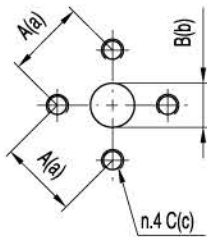
最大扭矩
Max.Torque 60 Nm



T0

最大扭矩
Max.Torque 100 Nm

油口/PORTS



E0

规格 TYPE	进油口 INLET			出油口 OUTLET		
	A	B	C	a	b	c
BAP1.5...2 ÷ BAP1.5...12	25.2	14.5	M6	25.2	14.5	M6